



## PUBLIC NOTICE

Intent to Sell University of Alaska

Owned Parcels in

Copper Center, Alaska

The University of Alaska Land Management Office (UALM) is seeking public comment on the attached disposal plan.

Parties interested in commenting on this proposed disposal plan must submit written comments to UALM by fax at (907) 786-7733, by email at [ua-land@alaska.edu](mailto:ua-land@alaska.edu), or at the address listed below no later than **5:00 P.M. on Monday, January 20, 2025**, to be considered.

---

Anchorage Office  
1815 Bragaw St. Ste. 101  
Anchorage, Alaska 99508

UNIVERSITY OF ALASKA  
Land Management

[www.alaska.edu/ualand](http://www.alaska.edu/ualand)  
[ua-land@alaska.edu](mailto:ua-land@alaska.edu)

Fairbanks Office  
2025 Yukon Dr. Ste. 211  
Fairbanks, Alaska 99775



## DISPOSAL PLAN

Intent to Sell University of Alaska

Owned Parcels in

Copper Center, Alaska

### Township 3 North, Range 1 West, Sections 4 and 26, Copper River Meridian

The University of Alaska ("University") intends to enter into a negotiated sale of two (2) parcels of land at or above fair market value. The parcels are located in the Copper Center area of Alaska. The parcels are rural with road access. If the negotiated sale(s) were to be discontinued, the University intends to offer these parcels for sale competitively or over-the-counter. The University intends to still sell these parcels at or above fair market value.

This disposal plan is effective as long as the University owns the parcels.

---

---

#### PARCEL INFORMATION

---

---

**PARCEL No.:** CB.TZ.0002

**Description:** South of milepost 112 on the Richardson highway, turn east on to Copperville Road, the parcel is approximately .25 mile down the road. The parcel spans between Copperville Road and Tazlina Terrace.

**Legal Description:** W½E½SW¼, T. 3N R. 1W, Sec. 4, containing approximately 39.25-acres, Copper River Meridian, Alaska

**PARCEL No.:** CB.NP.0003

**Description:** Located near the intersection of the Richardson Highway and Old Richardson Highway just before milepost 106 on the northeast side of the Old Richardson Highway.

**Legal Description:** Tract B, T 3N R. 1W, Sec. 26, containing approximately 13.861-acres, Copper River Meridian, Alaska

---

---

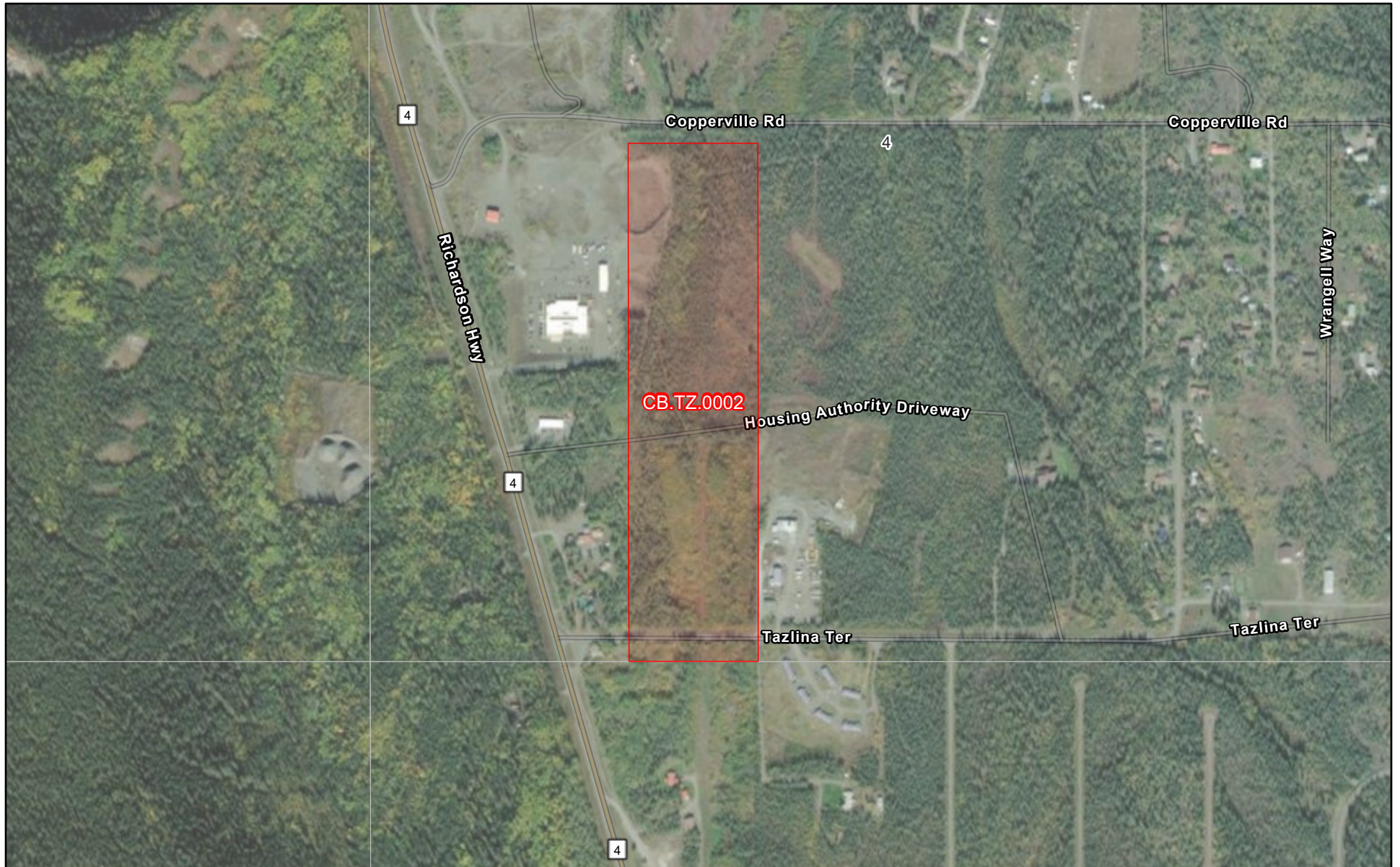
UNIVERSITY OF ALASKA  
Land Management

Anchorage Office  
1815 Bragaw St. Ste. 101  
Anchorage, Alaska 99508

[www.alaska.edu/ualand](http://www.alaska.edu/ualand)  
[ua-land@alaska.edu](mailto:ua-land@alaska.edu)

Fairbanks Office  
2025 Yukon Dr. Ste. 211  
Fairbanks, Alaska 99775

# CB.TZ.0002



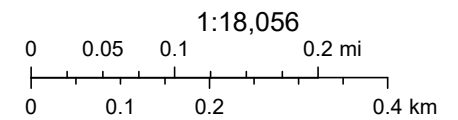
12/9/2024, 12:16:28 PM

Investment & Educational Properties - All Regions - Public View

Investment

PLSS Sections - Source: AK DNR

PLSS Townships - Source: AK DNR



State of Alaska, Esri, TomTom, Garmin, SafeGraph, METI/NASA, USGS, Bureau of Land Management, EPA, NPS, US Census Bureau, USDA,

University of Alaska Land Management



# CB.NP.0003



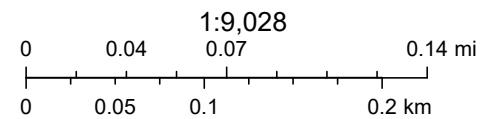
12/9/2024, 12:18:56 PM

Investment & Educational Properties - All Regions - Public View

Investment

PLSS Sections - Source: AK DNR

PLSS Townships - Source: AK DNR



State of Alaska, © OpenStreetMap, Microsoft, Esri, TomTom, Garmin, SafeGraph, METI/NASA, USGS, Bureau of Land Management, EPA, NPS,

University of Alaska Land Management