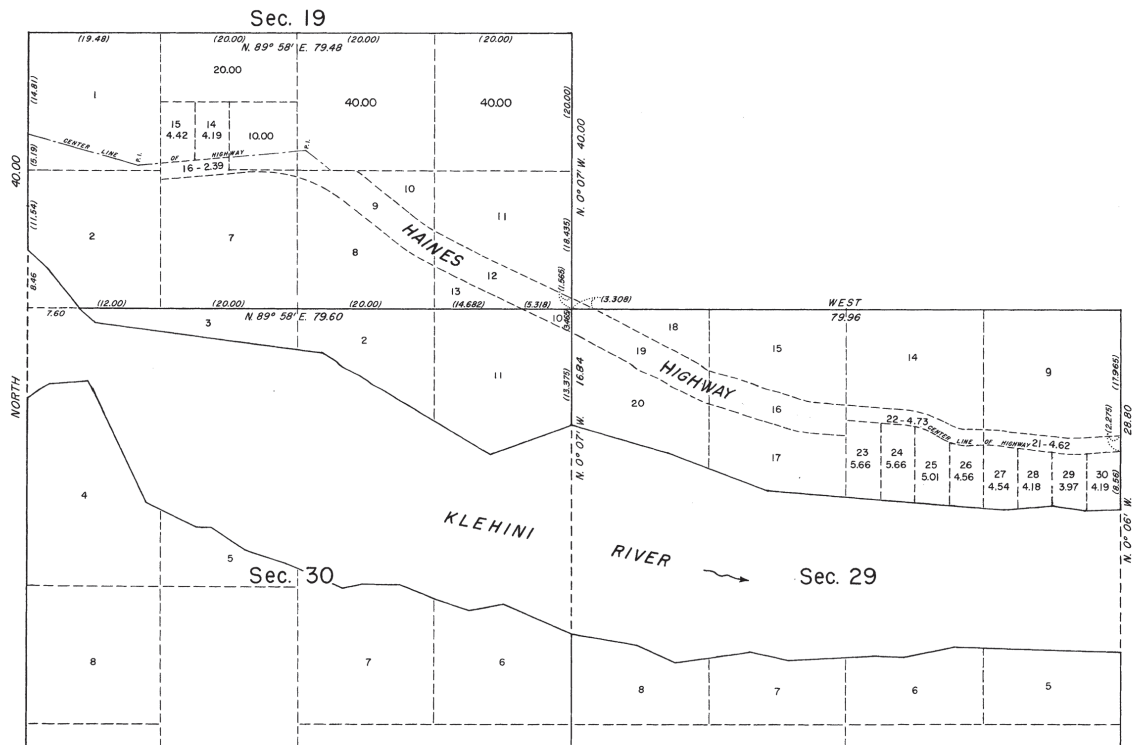
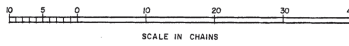


TOWNSHIP 28 SOUTH, RANGE 55 EAST, OF THE COPPER RIVER MERIDIAN, ALASKA
SUPPLEMENTAL PLAT OF SECTIONS 19 AND 29



This supplemental plat, based upon the township plat accepted July 29, 1953, shows: (1) amended lottings for a portion of the area embraced in original lots 5 and 6 of section 19 with a reversion of the remainder of that area, plus the area embraced in original lots 3 and 4, to the descriptions and areas contemplated by the township plat accepted June 29, 1926; (2) amended lottings for the area embraced in original lots 10, 11, 12, and 13 of section 29.



UNITED STATES DEPARTMENT OF THE INTERIOR
BUREAU OF LAND MANAGEMENT
Washington, D. C. October 20, 1959

This plat, showing amended lottings, is based upon the official records, and having been correctly prepared in accordance with the regulations, is hereby accepted.

For the Director
Clark F. Sumner
Acting Cadastral Engineering Staff Officer