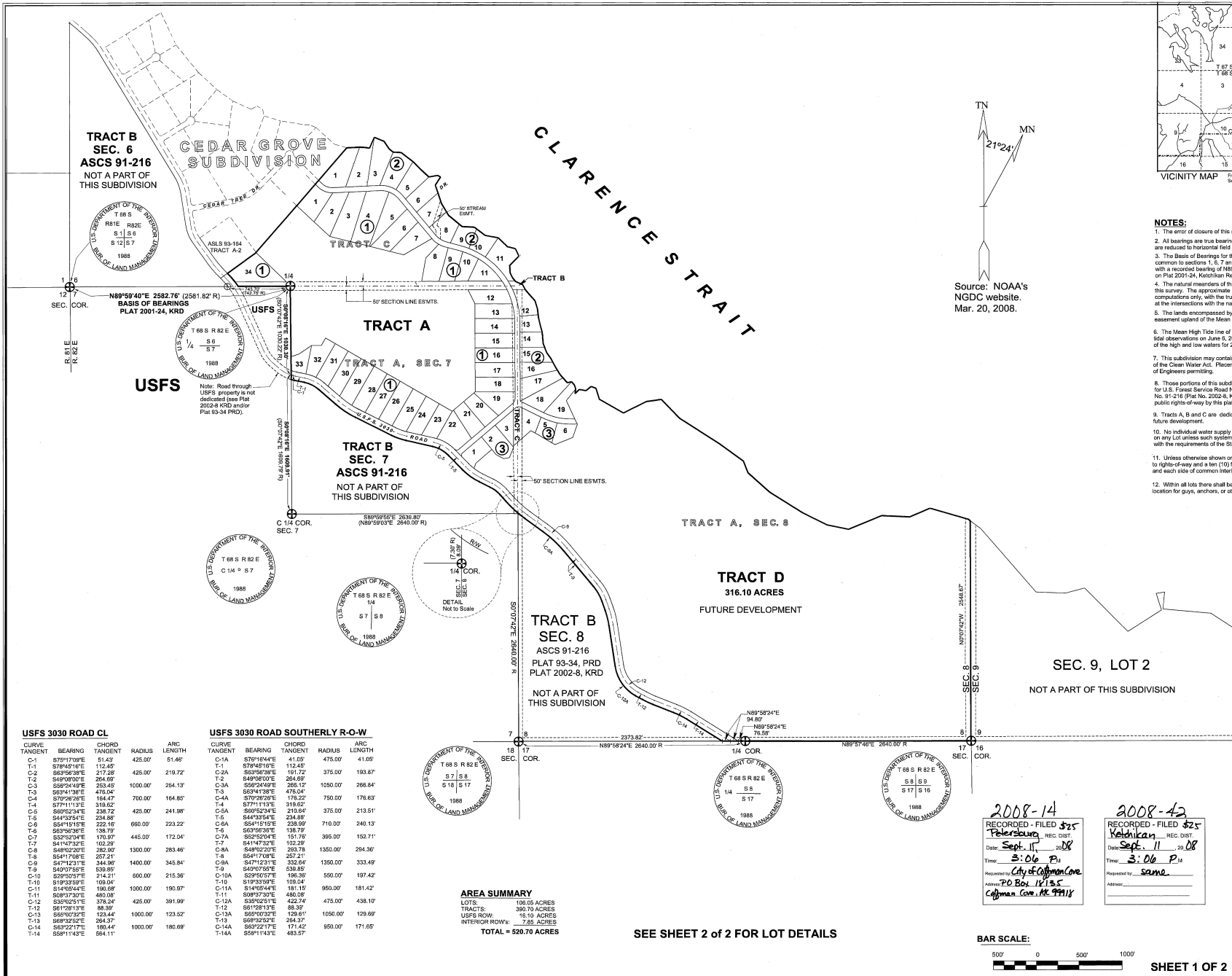


- NOTES:**
- The error of closure of this survey does not exceed 1:5,000.
  - All bearings are true bearings as oriented to the Basis of Bearings, and distances are reduced to horizontal field distances.
  - The Basis of Bearings for this survey is the line between the section corner common to sections 1, 6, 7 and 12 and the quarter corner common to sections 6 & 7 with a recorded bearing of N89°59'40"E and a recorded distance of 2581.82' as shown on Plat 2001-24, Ketchikan Recording District.
  - The natural meanders of the Mean High Tide line form the true bounds within this survey. The approximate Mean High Tide line shown hereon are for area computations only, with the true corners being on the sidelines or their extensions at the intersections with the natural meanders.
  - The lands encompassed by this survey are subject to a fifty (50) foot public access easement upland of the Mean High Tide line of Clarence Strait.
  - The Mean High Tide line of Clarence Strait was determined by time coordinated tidal observations on June 5, 2006 as extrapolated from the NOAA publication of the high and low waters for 2006.
  - This subdivision may contain wetlands as defined within the purview of Section 404 of the Clean Water Act. Placement of fill material may require prior U.S. Army Corps of Engineers permits.
  - Those portions of this subdivision subject to a public access and utility easement for U.S. Forest Service Road No. 3930 as shown hereon and as shown on ASCS No. 91-216 (Plat No. 2002-8, Ketchikan Recording District) are hereby dedicated as public rights-of-way by this plat.
  - Tracts A, B and C are dedicated to the public by this plat. Tract D is reserved for future development.
  - No individual water supply system or sewage disposal system shall be permitted on any Lot unless such system is located, constructed, and equipped in accordance with the requirements of the State of Alaska, Department of Environmental Conservation.
  - Unless otherwise shown or noted, there is a twenty (20) foot utility easement adjacent to right-of-way and a ten (10) foot utility easement each side of common interior lot lines and each side of common interior lines between the Lots and Tract A.
  - Within all lots there shall be a radial thirty-five (35) foot easement at each utility pole location for guys, anchors, or other supportive structures relating to utilities.

Source: NOAA's  
NGDC website.  
Mar. 20, 2008.



**USFS 3030 ROAD CL**

CURVE TANGENT	BEARING	CHORD TANGENT	RADIUS	ARC LENGTH
C-1	S78°17'00"E	51.43	425.00'	51.46'
T-1	S78°15'14"E	115.45		
C-2	S63°56'30"E	217.28	425.00'	219.72'
T-2	S68°00'00"E	264.69		
C-3	S68°24'48"E	263.49	1000.00'	264.13'
T-3	S68°24'18"E	476.04		
C-4	S70°26'20"E	164.47	700.00'	164.85'
T-4	S71°11'32"E	316.02		
C-5	S60°52'34"E	238.72	425.00'	241.98'
T-5	S64°23'54"E	234.86		
C-6	S64°15'15"E	222.16	660.00'	223.22'
T-6	S63°58'30"E	138.79		
C-7	S64°15'15"E	170.87	445.00'	172.04'
T-7	S41°47'32"E	102.29		
C-8	S68°00'00"E	264.69	1300.00'	263.46'
T-8	S64°17'08"E	257.21		
C-9	S67°12'21"E	344.90	1400.00'	345.94'
T-9	S49°07'50"E	538.85		
C-10	S29°26'20"E	214.21	600.00'	215.36'
T-10	S18°25'25"E	109.04		
C-11	S14°08'54"E	180.68	1000.00'	190.87'
T-11	S68°17'30"E	460.08		
C-12	S36°25'25"E	376.24	425.00'	391.99'
T-12	S61°01'30"E	68.30		
C-13	S68°00'00"E	123.44	1000.00'	123.52'
T-13	S68°00'00"E	264.69		
C-14	S63°22'17"E	180.44	1000.00'	180.69'
T-14	S59°11'43"E	564.11		

**USFS 3030 ROAD SOUTHERLY R-O-W**

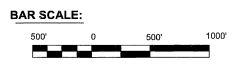
CURVE TANGENT	BEARING	CHORD TANGENT	RADIUS	ARC LENGTH
C-1A	S78°15'14"E	41.80	476.00'	41.89'
T-1A	S78°40'16"E	112.49		
C-2A	S63°56'30"E	191.72	375.00'	193.87'
T-2A	S68°00'00"E	264.69		
C-3A	S68°24'48"E	268.12	1090.00'	266.84'
T-3A	S68°24'18"E	476.04		
C-4A	S70°26'20"E	176.22	790.00'	176.63'
T-4A	S71°11'32"E	316.02		
C-5A	S60°52'34"E	210.64	375.00'	213.51'
T-5A	S64°23'54"E	234.86		
C-6A	S64°15'15"E	238.99	710.00'	240.13'
T-6A	S63°58'30"E	138.79		
C-7A	S64°15'15"E	151.79	395.00'	152.71'
T-7A	S41°47'32"E	102.29		
C-8A	S68°00'00"E	264.69	1350.00'	264.36'
T-8A	S64°17'08"E	257.21		
C-9A	S67°12'21"E	332.64	1350.00'	333.49'
T-9A	S49°07'50"E	538.85		
C-10A	S29°26'20"E	196.30	550.00'	197.42'
T-10A	S18°25'25"E	109.04		
C-11A	S14°08'54"E	181.19	950.00'	181.42'
T-11A	S68°17'30"E	460.08		
C-12A	S36°25'25"E	422.74	475.00'	438.10'
T-12A	S61°01'30"E	68.30		
C-13A	S68°00'00"E	129.61	1050.00'	129.69'
T-13A	S68°00'00"E	264.69		
C-14A	S63°22'17"E	171.42	850.00'	171.65'
T-14A	S59°11'43"E	453.57		

**AREA SUMMARY**  
 LOTS: 106.55 ACRES  
 TRACTS: 380.79 ACRES  
 USFS ROW: 16.10 ACRES  
 INTERIOR ROW: 7.85 ACRES  
**TOTAL = 520.70 ACRES**

SEE SHEET 2 of 2 FOR LOT DETAILS

2008-14  
 RECORDED - FILED \$25  
 Peterburg REC. DIST.  
 Date: Sept. 11, 2008  
 Time: 3:06 P.M.  
 Requested by: City of Coffman Cove  
 Address: PO Box 18155  
 Coffman Cove, AK 99918

2008-42  
 RECORDED - FILED \$25  
 Ketchikan REC. DIST.  
 Date: Sept. 11, 2008  
 Time: 3:06 P.M.  
 Requested by: same



PLAT OF  
**ETOLIN VIEW SUBDIVISION**

THE SUBDIVISION OF:  
 TRACT C, CEDAR GROVE SUBDIVISION,  
 PLAT 2001-14, PRD, PLAT 2001-24, KR.D,  
 TRACT A SECTION 7, ASCS 91-216, PLAT 93-34 PRD, PLAT 2002-8, KR.D,  
 TRACT A SECTION 8, ASCS 91-216, PLAT 93-34 PRD, PLAT 2002-8, KR.D.

**CREATING:**  
 LOTS 1-34, BLOCK 1  
 LOTS 1-19, BLOCK 2  
 LOTS 1-6, BLOCK 3  
 TRACTS A, B, C and D

LOCATED WITHIN PARTIALLY SURVEYED  
 SECTIONS 6, 7 and 8, T. 68 S., R. 82 E., C.R.M.  
 KETCHIKAN RECORDING DISTRICT  
 CONTAINING 520.70 Acres.

Surveyed by:  
 University of Alaska  
 1815 Bragaw Street  
 Suite 151  
 Anchorage, AK 99508  
 Phone/Fax 907-247-5120

Surveyed by:  
 TEMPLE LAND SURVEYING  
 PO Box 1078  
 Ward Cove, AK 99928  
 Phone/Fax 907-247-5120

Date of Survey:  
 Beginning: 8/1/2007  
 Ending: 8/1/2008

Drawn by: Craig Tempin

Date of Plat:  
 AUGUST 6, 2008

File No.: