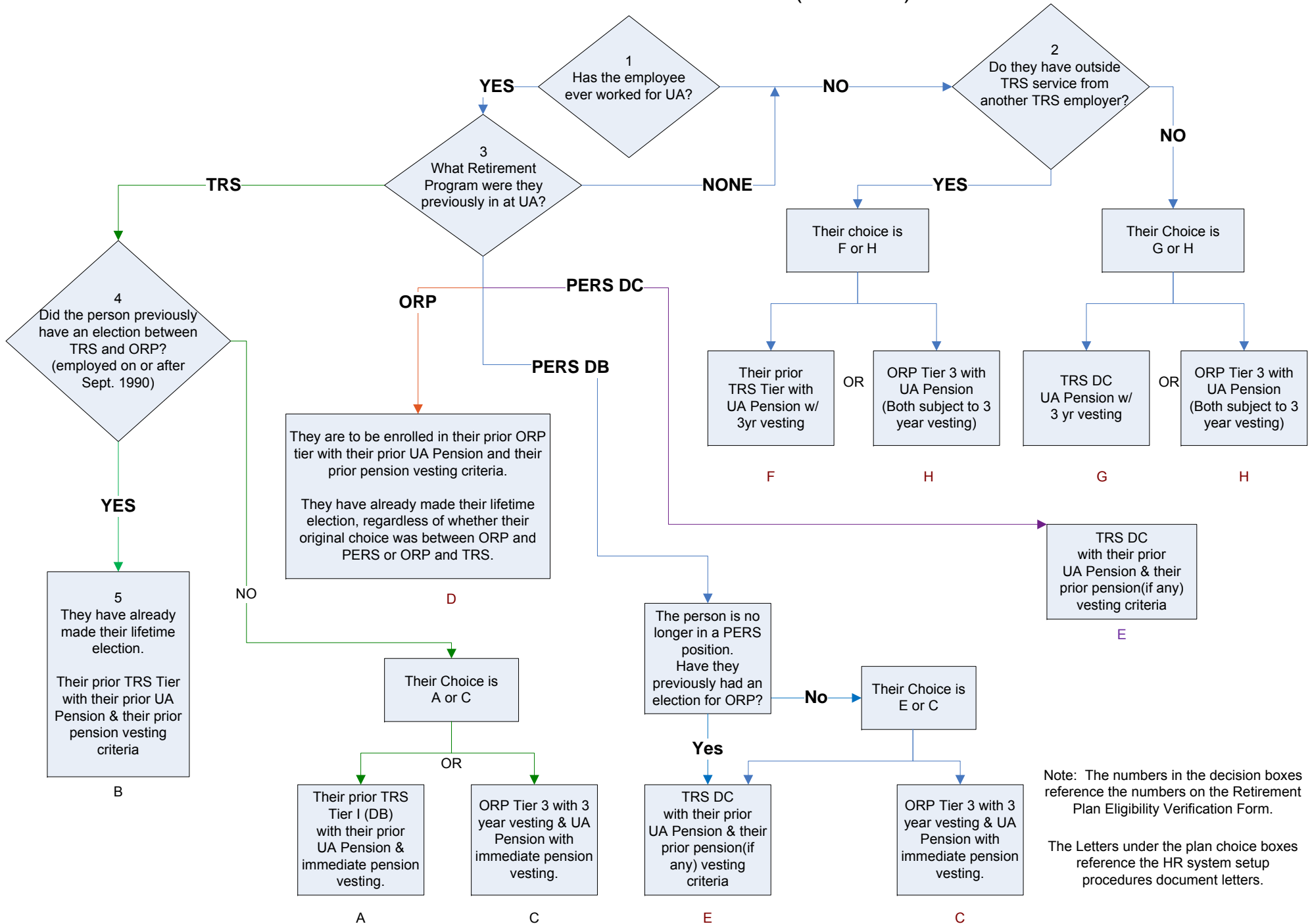


Retirement Decision Tree

for New Hires & Re-hires of a Regular Faculty (A9, AR, F9 or FN) or Academic Officer/Sr. Administrator (FR or EX) Position



Note: The numbers in the decision boxes reference the numbers on the Retirement Plan Eligibility Verification Form.

The Letters under the plan choice boxes reference the HR system setup procedures document letters.