

Salmon 2050: Implications Workshop Summary

Thank you for participating in the Implications Workshop. We were incredibly impressed with the level of engagement and interest you provided during our second workshop. Here is a summary of your work and an outline of when and how you can continue to be involved with this effort going forward.

Scenario Narratives

We are grateful for the quality of feedback regarding our draft scenarios. See the “Four Cs Summary” (Clarifications, Compliments, Concerns and Changes) on our project [website](#). We are working with a steering committee to refine the draft scenarios to: 1) highlight the most significant uncertainties facing salmon and 2) better integrate commercial fishing interests. A complete set of the most recent scenario narratives can be found on our project website at: <http://southcentral.epscor.alaska.edu/salmon-2050>.

Scenarios and Major Implications

Below is a summary of the five scenarios and the top three implications, as defined by workshop participants, for each scenario.

Scenario 1 - Retirement Paradise

Implications:

1. Fisheries will be more restrictive (permits, potential for fish stocking)
2. Development valued along water bodies with premium on the Kenai River frontage road
3. Increased boat traffic



Uncertainty	Rates of Change
Freshwater Climate	Moderate
Economic Development	Low
Ocean Conditions	Moderate
Pop. Increase Local Demand	High
Personal Use Fishery	Moderate
Sport Fisherman User Days	High

Scenario 2 - Industrial Boom

Implications:

1. LNG discharge permits
2. Warming will impact estuaries and wetlands
3. LNG leads to increased land use and additional planning and regulation (government spending increases 300%)

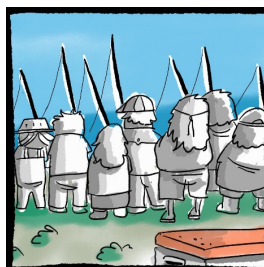


Uncertainty	Rates of Change
Freshwater Climate	High
Economic Development	High
Ocean Conditions	Moderate
Pop. Increase Local Demand	Moderate
Personal Use Fishery	Low
Sport Fisherman User Days	Low

Scenario 3 - More People More Fish

Implications:

1. Limited entry fishery with more intensive fishery regulations
2. Increased need for public use infrastructure (campsites, restrooms, gut barge, garbage cans)
3. Limited river access at Russian River campground

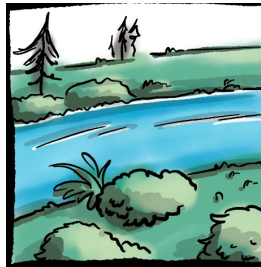


Uncertainty	Rates of Change
Freshwater Climate	Low
Economic Development	High
Ocean Conditions	Low
Pop. Increase Local Demand	High
Personal Use Fishery	Moderate
Sport Fisherman User Days	High

Scenario 4 - Ocean Crash

Implications:

1. Increased pressure between sport, commercial, and personal use fisheries
2. Decline in sport and personal use interest returns us to past conditions
3. Increased flooding and fall high water events

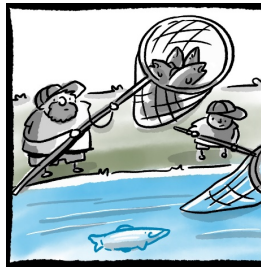


Uncertainty	Rates of Change
Freshwater Climate	Moderate
Economic Development	Low
Ocean Conditions	High
Pop. Increase Local Demand	Low
Personal Use Fishery	Low
Sport Fisherman User Days	Low

Scenario 5 - Fish for the Masses

Implications:

1. Warmer streams with less streamflow
2. Increased wildfires across watershed, including forest service lands
3. Greater demand for sport and personal use access points and associated infrastructure



Uncertainty	Rates of Change
Freshwater Climate	High
Economic Development	Low
Ocean Conditions	Moderate
Pop. Increase Local Demand	Low
Personal Use Fishery	High
Sport Fisherman User Days	Moderate

For a complete gallery of the information and implications generated at Workshop 2, including maps of where impacts and management actions would occur, see our project website:

<http://southcentral.epscor.alaska.edu/salmon-2050>.

Next Steps

Scenario analysis and alternative futures

We have been busy developing regional economic models, digging into the current climate change models, developing streamflow-temperature-fish growth models, and identifying urban growth simulators to quantify the impacts under each of the scenarios to salmon habitat. In the coming months, there will be opportunities to review our models and see how the scenarios impact the Kenai River watershed through a series of maps and images. These are meant to assign a physical identity to the scenarios so the narratives move away from being hypothetical concepts into something we can truly envision.

Finalization of scenario narratives

After working with the steering committee to revise the draft scenarios, we will send them out for review. We will then work with a group of creative artists to turn the scenario narratives into stories with more depth.

Fall Workshops

In our final set of workshops, we will be working with individual interest groups to ensure that these scenarios are relevant and useful to the various government and non-governmental perspectives in the Kenai watershed. We have tentatively identified the below groups:

- Commercial Fish (ADF&G + NGOs Environmental (ADF&G Habitat, USFWS, NGOs)
- Tribal entities
- Sport Fish (ADF&G + NGOs)
- State of Alaska Board of Fish

These workshops have two goals: 1) to appropriately address all interests in each scenario narrative, and 2) to ensure that these scenarios have life beyond this project. It is very important to our research team that this work lives on past the current project resources and scope to support effective and inclusive management systems for the salmon of the Kenai River watershed.

For more information contact: Courtney Breest, EPSCoR Outreach Coordinator - cfbreest@uaa.alaska.edu