

Presentation to the University of Alaska Board of Regents

June 5, 2014

ANSWERS **ALASKA'S P-20W SLDS**

Mission: Deliver outcomes information to Alaska stakeholders to assess, evaluate, and improve the state's education and career development spectrum.



ANSWERS is a collaboration of the Alaska Commission on Postsecondary Education, the University of Alaska, Alaska Department of Education & Early Development, and Alaska Department of Labor and Workforce Development.

ACPE.ALASKA.GOV/ANSWERS

Project Overview

- ★ **ANSWERS:** Alaska Navigator: Statewide Workforce and Education-Related Statistics
- ★ **P-20W SLDS:** Early learning-workforce statewide longitudinal data system
- ★ Federal grant - \$4 million over July 2012 to June 2015
 - ★ Links existing K-12, postsecondary and workforce data
- ★ Collaborative effort of:
 - ★ Alaska Commission on Postsecondary Education (ACPE),
 - ★ University of Alaska (UA),
 - ★ Department of Education & Early Development (EED), and
 - ★ Department of Labor & Workforce Development (DOL&WD)



ACPE.ALASKA.GOV/ANSWERS

Summary Across the States

- ★ Three grant priorities, as designated by the 2012 Institute of Education Sciences Grant.
 - ★ K12 Systems
 - ★ Linkage of K-12 systems and early childhood information
 - ★ Linkage of K-12 systems to workforce and/or postsecondary education
- ★ Map on next slide presents state-by-state summary of SLDS development
 - ★ Alaska received additional personnel exchange grant to visit and learn from other states (AR, MS, KY)



ACPE.ALASKA.GOV/ANSWERS



ACPE.ALASKA.GOV/ANSWERS

Objectives, slide 1

- ★ Create secure, state longitudinal data system to provide critical information to Alaska's policymakers, educators, and general public about Alaska's education and workforce outcomes by linking existing cross-sector data, to evaluate:
 - ★ Student transitions
 - ★ Performance in education and workforce systems
 - ★ Return on investment, as related to program outcomes
 - ★ Key policy and research questions



Objectives, slide 2

- ★ Create reports, dashboards, and information products to provide timely, value-added information in audience-appropriate formats to better inform decision and policy-making, within specific parameters:
 - ★ Relies on input from existing data systems
 - ★ Addresses cross-sector issues not readily answered by individual partners
 - ★ Data and reporting conform to best practices and privacy laws



Project Outcomes and Timeline

1. Planning and Preparation (complete) – July 2012 to June 2013
 2. Infrastructure (in progress) – July 2013 to September 2014
 3. Development (in progress) – March 2014 to March 2015
 4. Data Reporting (in progress) – May 2014 to April 2015
 5. Training/Professional Development – January 2015 to June 2015
 6. Sustainability – July 2014 to June 2015
- ★ Dates are revised on a monthly basis based on project activities



Project Progress

Completion of Outcome 1 – Planning and Preparation

- ★ Established and implemented governance structure
- ★ Analysis of existing data systems
- ★ Created stakeholder engagement and communication plan
- ★ Proof-of-concept reports issued and stakeholder input gathered
- ★ Developed business and technical requirements
- ★ Partner agreement on system design, platform, and processes



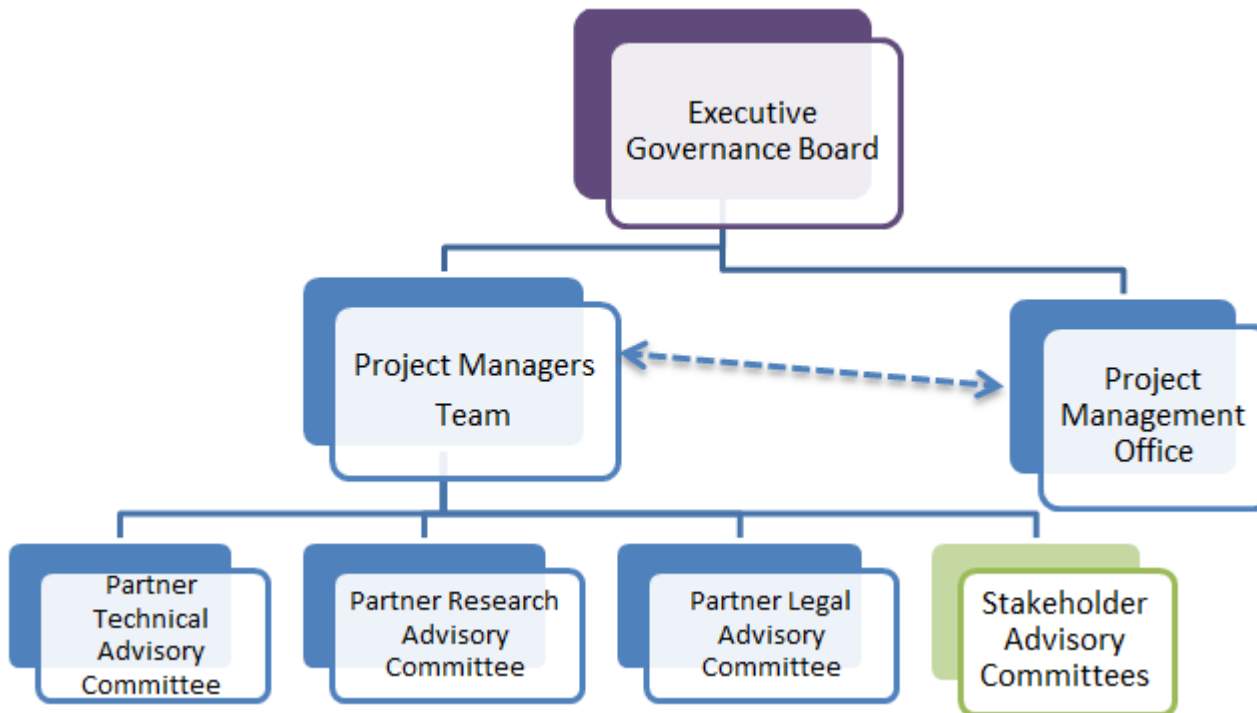
ANSWERS Governance

- ★ Established in Governor's [2011 Administrative Order 261](#)
- ★ Executive Governance Board:
 - ★ Executive authority and responsibility for ANSWERS
 - ★ ACPE Executive Director, UA President , EED and DOLWD Commissioners
- ★ Program Governance:
 - ★ Proposes policies and operating principles
 - ★ Provides direction and guidance to ANSWERS staff
 - ★ Ensures implementation of executive directives
 - ★ Program managers from ACPE, UA, EED and DOLWD



ACPE.ALASKA.GOV/ANSWERS

ANSWERS Governance Diagram



ANSWERS Reporting

- ★ Governed by ANSWERS policy questions
- ★ Multiple reporting levels with appropriate suppressions/control levels
 - ★ Approved research access
 - ★ Feedback reports to stakeholders, such as:
 - ★ School district feedback reports
 - ★ APS and program outcomes analyses
 - ★ Responses to legislative or custom information requests
 - ★ Public site/dashboards



ACPE.ALASKA.GOV/ANSWERS

Challenges and Opportunities - 1

- ★ Sustainability
 - ★ Need to seek long-term funding and positions
 - ★ Must first demonstrate value and identify associated costs
- ★ Scope
 - ★ Grant is to link existing partner data
 - ★ Demand is for more utility and data use options



Challenges and Opportunities - 2

- ★ Public perception
 - ★ Concern about potential misuse of data and sensitivity to big data
 - ★ Policymaker interest in more access to data
- ★ Stakeholder engagement
 - ★ Stakeholders desire to expand data use and products
 - ★ Stakeholders lack time/resources to provide detailed input and feedback



Grant Expenditures to Date (May 2014)

Budget Category	Actual Expenses	Remaining Budget	Total
Personnel	\$28,586	\$364,144	\$392,730
Fringe Benefits	8,282	369,050	377,332
Travel	102,731	80,000	182,731
Equipment	--	302,166	302,166
Supplies	4,202	14,798	19,000
Contractual	714,033	1,942,008	2,656,041
Other	6,860	63,140	70,000
Total Costs	\$864,694	\$3,135,306	\$4,000,000



ANSWERS Sustainability Plan

- ★ Creation of ANSWERS Program Management Office (PMO) in 2015
 - ★ Reports through ANSWERS director to Executive Governance Board
 - ★ Coordinates info/research request responses with partners
 - ★ Develops, distributes and updates public reports, identifies evolving stakeholder needs, and proposes new information products
 - ★ Provisions controlled access to ANSWERS for approved users
 - ★ Ensures ongoing system maintenance and security



ACPE.ALASKA.GOV/ANSWERS

ANSWERS Cost Projections - 1

- ★ Estimates based on current assumptions and information, to be refined over time
- ★ Initial funding from Alaska Student Loan Corporation (ASLC) as part of ACPE's operating budget
 - ★ Demand for information and demonstration of value will drive longer-term sustainability planning
 - ★ Funding structure to be evaluated after initial operational years to identify long-term funding model and program location



ACPE.ALASKA.GOV/ANSWERS

ANSWERS Cost Projections - 2

- ★ Annual direct costs of ~\$1M post grant project - ASLC FY16 funding
 - ★ PMO staffing (management, research, and technical roles)
 - ★ Partner organization costs (report development, data submission and validation, etc.)
 - ★ Other administrative costs (facilities, supplies, travel, etc.)
 - ★ ACPE in-kind for indirect expenses such as facilities, network administration, etc.



ANSWERS Future Expansion Opportunities

- ★ Potential phase II (post-grant) opportunities, based on expandable, scalable system design:
 - ★ Additional data sources, uses and products
 - ★ Addition of DHSS, Corrections or other data relevant to education outcomes assessment?
 - ★ Program-specific outcomes reports to education program providers?
 - ★ Leveraging of trend data to ensure individual students guided regarding education pathways of most benefit?
 - ★ Development of new tools such as early warning systems or workforce demand models



ACPE.ALASKA.GOV/ANSWERS

ANSWERS Future Funding Opportunities

- ★ Potential future grants
 - ★ IES research grants
 - ★ Proposed NCES FY15 SLDS grant
 - ★ Partner pursuit of grant-funded projects utilizing ANSWERS data
 - ★ Private grant opportunities
- ★ Fee-for-service options
 - ★ Fees for non-partner research access
 - ★ Research and outcomes-measurement consulting



ACPE.ALASKA.GOV/ANSWERS

Questions and Comments

★ ANSWERS Contacts:

★ Gwendolyn Gruenig, UA ANSWERS Project Manager:
gdgruenig@alaska.edu or 450-8190

★ Kerry Thomas, ANSWERS Project Manager:
kerry.thomas@alaska.gov or 465-6749

★ Stephanie Butler, ANSWERS Project Director:
stephanie.butler@alaska.gov or 465-6743

★ ANSWERS Website - acpe.alaska.gov/ANSWERS



ACPE.ALASKA.GOV/ANSWERS

Handouts

- ★ Project summary:
http://acpe.alaska.gov/Portals/0/OTHER/Pubs/ANSWERS_Project_Summary.pdf
- ★ Policy questions:
http://acpe.alaska.gov/Portals/0/OTHER/Pubs/ANSWERS_Policy_Questions.pdf
- ★ ANSWERS notecard:
http://acpe.alaska.gov/Portals/0/OTHER/Pubs/ANSWERS_Notecard.pdf
- ★ District feedback report:
https://acpe.alaska.gov/Portals/0/Sample_District_Feedback_Report.pdf
- ★ Interpreting the district feedback report:
https://acpe.alaska.gov/Portals/0/Interpreting_Feedback_Report.pdf



ANSWERS is a collaboration of the Alaska Commission on Postsecondary Education, the University of Alaska, Alaska Department of Education & Early Development, and Alaska Department of Labor and Workforce Development.

ACPE.ALASKA.GOV/ANSWERS