



VERMEER CORPORATION

MAKING A REAL IMPACT IN A PROGRESSING WORLD

Vermeer[®]





Precision Continuous Surface Mining





Vermeer Terrain Leveler[®] SEM Video

Vermeer[®]



EQUIPPED TO
DO MORE.[®]



Surface Mining Applications

Terrain Leveler SEM advantages



- Single-side direct drive
- Convenient and ergonomic access to change teeth



Surface Mining Applications

Terrain Leveler SEM advantages

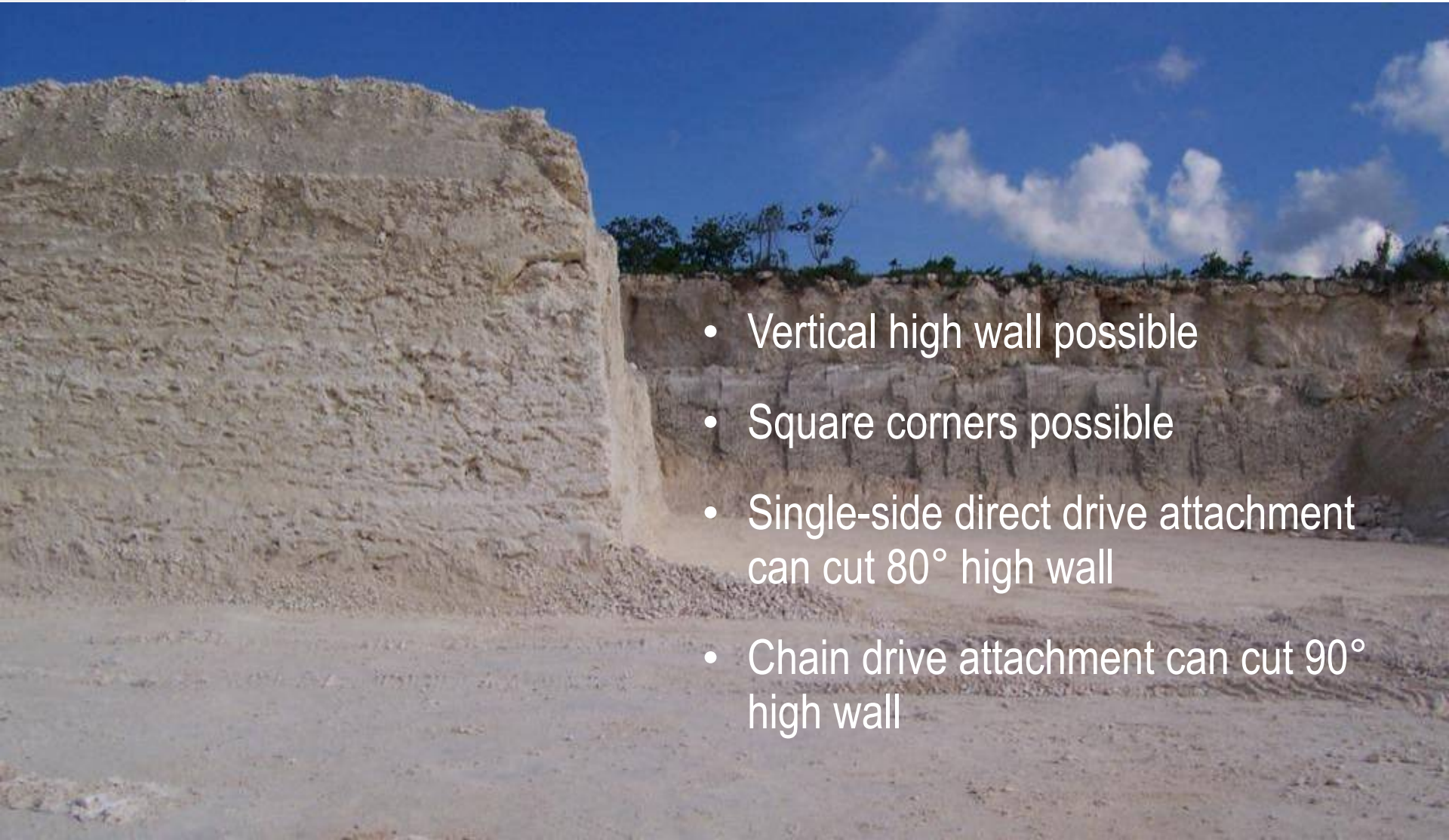
- Uniform product size
- Can bypass the primary crusher





Surface Mining Applications

Terrain Leveler SEM advantages

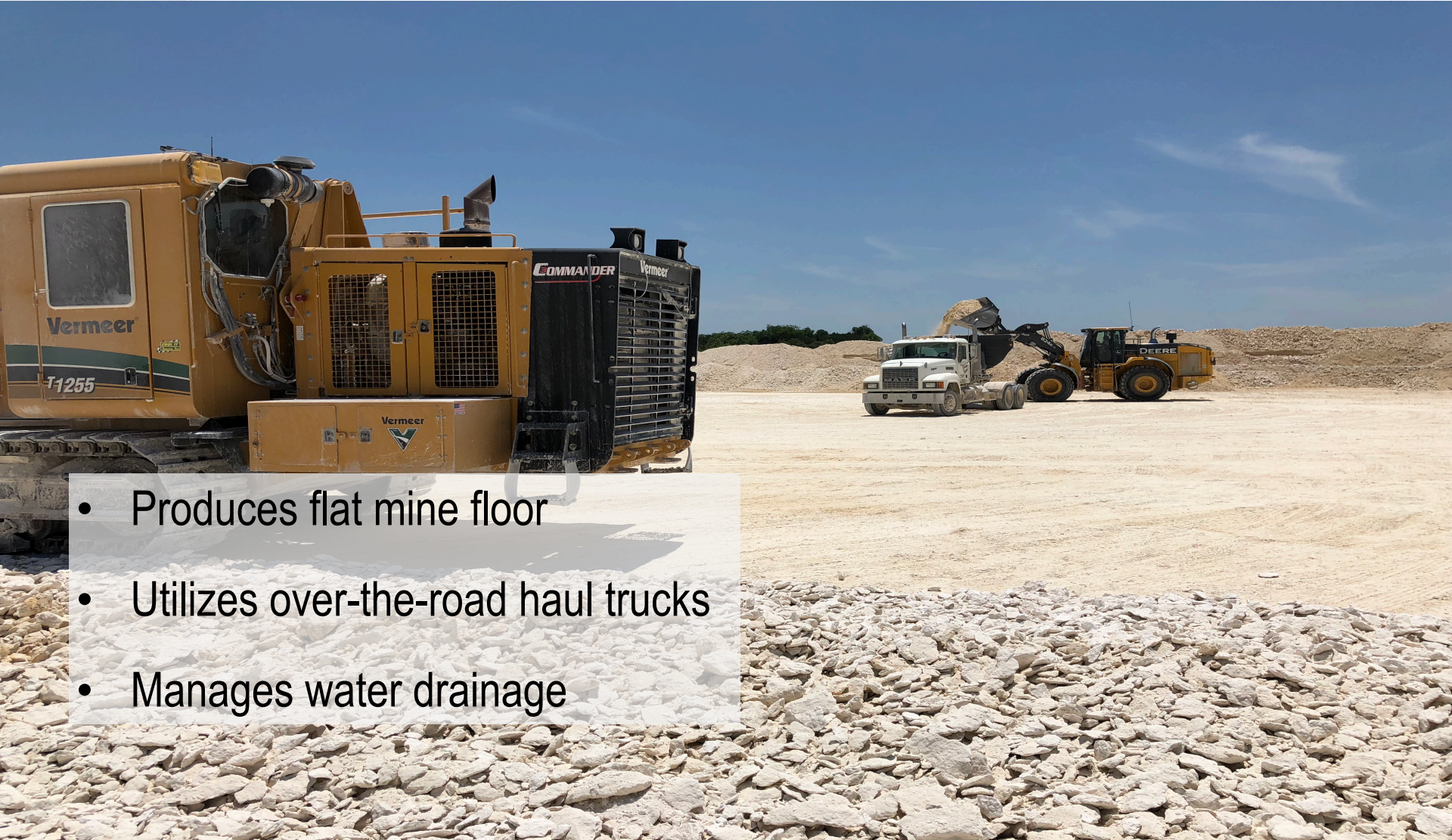


- Vertical high wall possible
- Square corners possible
- Single-side direct drive attachment can cut 80° high wall
- Chain drive attachment can cut 90° high wall



Surface Mining Applications

Terrain Leveler SEM advantages



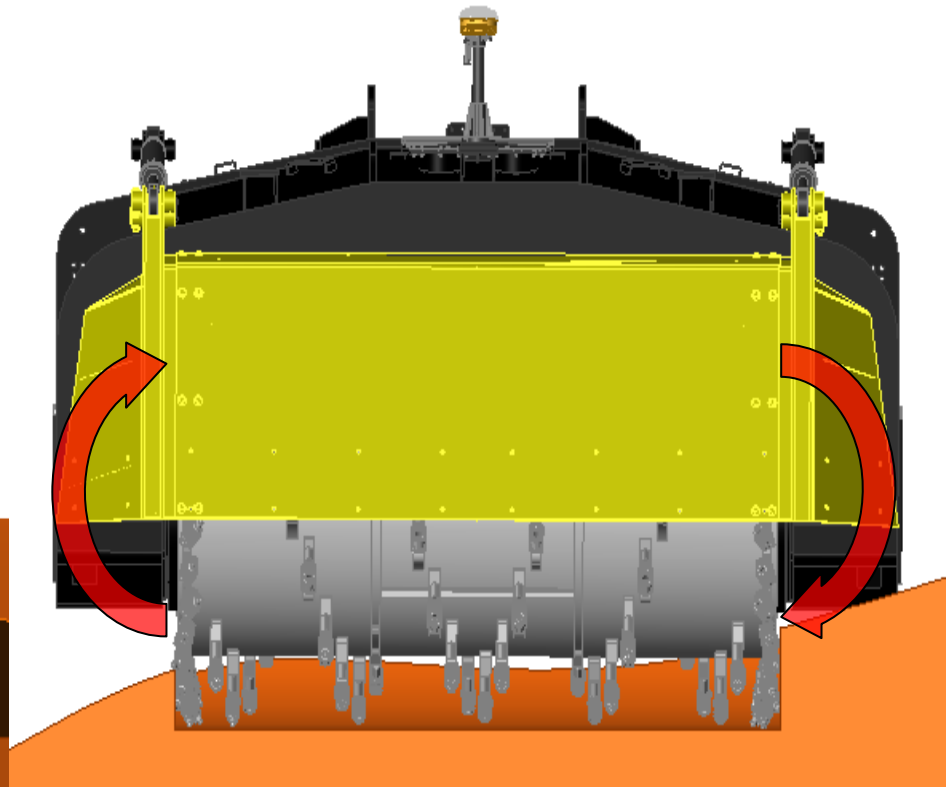
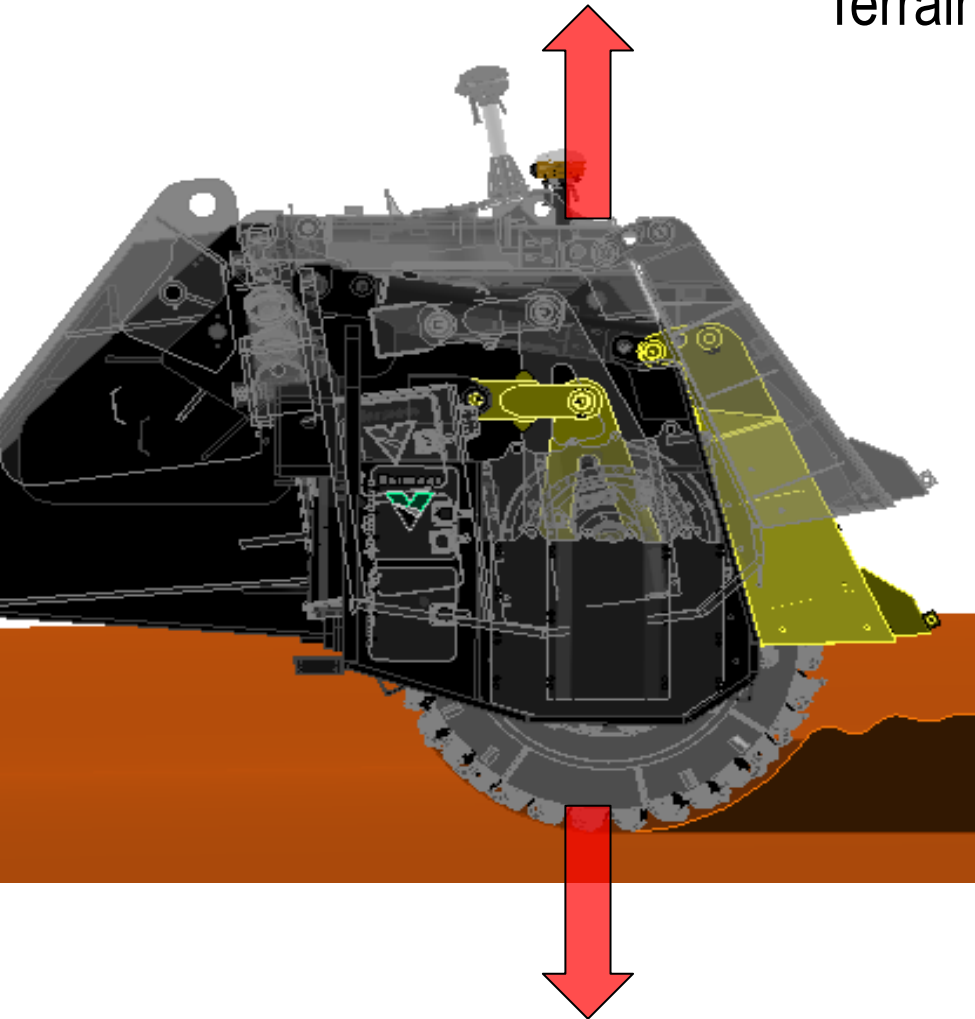
- Produces flat mine floor
- Utilizes over-the-road haul trucks
- Manages water drainage



Surface Mining Applications

Terrain Leveler SEM advantages

Terrain Leveler SEM tilting head

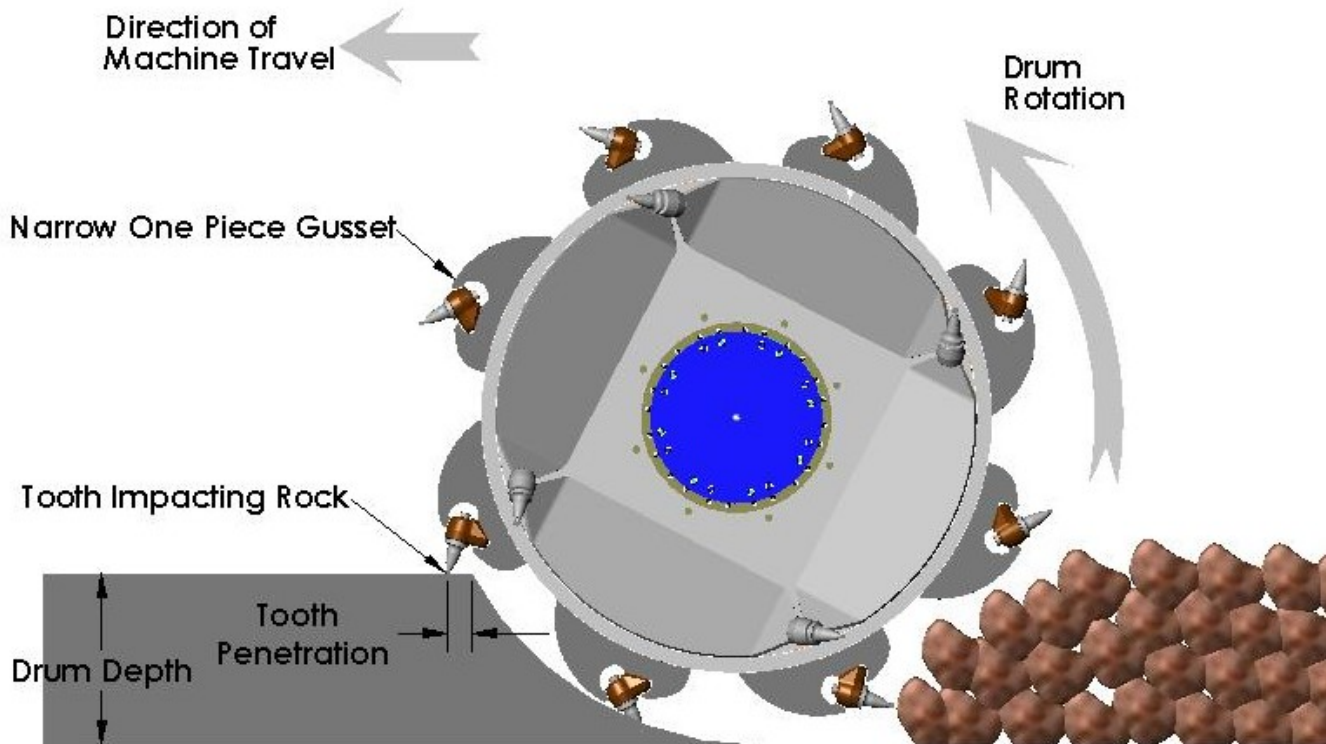




Surface Mining Applications

Terrain Leveler SEM advantages

Terrain Leveler SEM – Top-down cutting



- Reduces fines
- Consistent product size
- Reduced wear on cutting teeth
- Requires less horsepower; cuts in direction of travel



Surface Mining Applications

Terrain Leveler SEM GNSS guidance

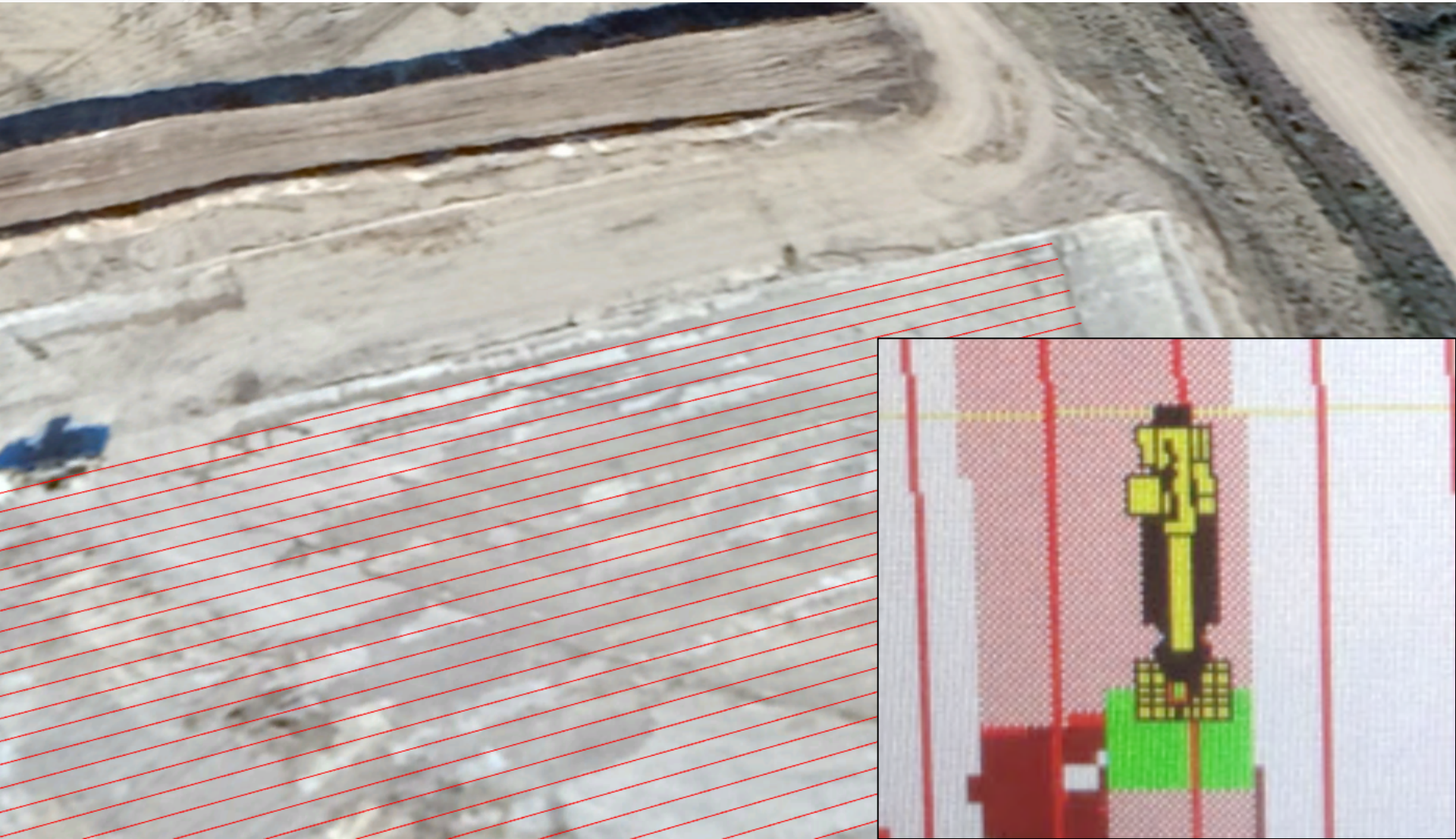
- Mine-by-line: GNSS system will cut 3D to mine plan
- Slope mine, create ramps, pit sumps, roads, waterways, etc. while mining
- Chase specific seams
- GNSS control helps reduce risk of human error and enables minimal cutting head overlap
- Optimizes productivity by minimizing steering corrections





Surface Mining Applications

Terrain Leveler SEM GNSS AutoSteer





Surface Mining Applications

Terrain Leveler SEM GNSS AutoSteer





Vermeer Contact Information



Mike Selover

Corporate Accounts Manager

mselover@vermeer.com

641-629-9472 Cell

641-621-8789 Work

[www.linkedin.com/in/](http://www.linkedin.com/in/michaelselover)

michaelselover

Connect with me on LinkedIn

Vermeer®



**EQUIPPED TO
DO MORE.™**

Vermeer Corporation reserves the right to make changes in engineering, design and specifications; add improvements; or discontinue manufacturing at any time without notice or obligation. Equipment shown is for illustrative purposes only and may display optional accessories or components specific to their global region. Please contact your local Vermeer dealer for more information on machine specifications. Vermeer, the Vermeer logo, Equipped to Do More, Terrain Leveler, Commander and TEC are trademarks of Vermeer Manufacturing Company in the U.S. and/or other countries. All other trademarks, registered trademarks and service marks are the property of their respective owners.

© 2019 Vermeer Corporation. All Rights Reserved.