

♦ UNIVERSITY OF ALASKA ♦
 ♦ FACILITIES AND LAND MANAGEMENT ♦
 ♦ 1815 Bragaw Street, Suite 101, Anchorage, Alaska 99508-3438 ♦
 ♦ Phone: (907) 786-7766 ♦ Fax: (907) 786-7733 ♦

SOUTH MITKOF ISLAND TIMBER SALE DEVELOPMENT AND DISPOSAL PLAN

**PETERSBURG, ALASKA
 T61S, R82E, SEC. 28 & 29
 COPPER RIVER MERIDIAN
 PETERSBURG RECORDING DISTRICT**

The University of Alaska (the “University”) intends to offer to qualified individuals or entities the opportunity to harvest timber on the University’s South Mitkof Island parcel. The South Mitkof Island parcel is approximately 29 miles southeast of Petersburg on Mitkof Highway. The total area for the South Mitkof Island parcel is approximately 658 acres of which 323 acres is old growth Sitka spruce, western hemlock and yellow cedar. All interested parties will have the opportunity to submit an offer to harvest select old growth timber within the South Mitkof Island parcel.¹

The University will consider offers to harvest timber from qualified individuals or entities, at fair market value, in accordance with the “*2014 South Mitkof Island Competitive Timber Sale Development and Disposal Terms and Conditions*.” Competitive offers must be received at the address listed, by no later than **5:00 P.M. on Wednesday, March 19, 2014**.

It is the sole responsibility of any interested party to ensure that they have received any amendments to this South Mitkof Island Competitive Timber Sale Development and Disposal Plan. The South Mitkof Island Competitive Timber Sale Development and Disposal Plan and any amendments thereto, are available on the Facilities and Land Management website at www.ualand.com. The University intends to award a contract near the end of April 2014.

Parties interested in commenting on the South Mitkof Island Competitive Timber Sale Development and Disposal Plan must submit written comments to the University of Alaska through its Facilities and Land Management department by fax at (907) 786-7733, by email at ua-land@alaska.edu or at the following address, by no later than **5:00 P.M. on Monday, March 17, 2014** to be considered.

**University of Alaska
 Facilities and Land Management
 1815 Bragaw Street, Suite 101
 Anchorage, Alaska 99508-3438**

¹ Regents’ Policy P05.11.020.A, (Definitions “development plan”).

♦ COMPETITIVE TIMBER SALE ♦

SOUTH MITKOF ISLAND TIMBER SALE DEVELOPMENT AND DISPOSAL PLAN

The University of Alaska (the “University”) is offering to qualified individuals or entities the opportunity to harvest timber on the University’s South Mitkof Island parcel. The University’s South Mitkof Island parcel is located approximately 29 miles southeast of Petersburg along the Mitkof Highway. The total area for the South Mitkof Island parcel is approximately 658 acres of which 323 acres is old growth Sitka spruce, western hemlock and yellow cedar. All interested parties will have the opportunity to submit an offer to harvest select old growth timber within the South Mitkof Island parcel.²

Access to the South Mitkof Island parcel is by road, floatplane or boat. Old logging roads within the parcel may need to be reconstructed in order to provide locations for helicopter landings. The United States Forest Service (USFS) is responsible for the road Rights-of-Way (ROW) and will need to be contacted to coordinate all reconstruction and post-harvest close-out requirements.

This sale will be primarily a select cut helicopter logging operation with some shovel logging ground near the Mitkof Highway. Export of logs will be permitted on this sale but the successful bidder is encouraged to provide some timber to local markets.

The Alaska Department of Fish and Game (“ADFG”) currently identifies one anadromous fish stream on the University’s South Mitkof parcel. This stream will require a 100’ no cut buffer on both sides. There is an additional unnamed stream in the eastern part of the parcel which will require a 50’ buffer

There will be a 100’ management zone from the mean high water mark bordering salt water.

There are two Marine Access Facilities (MAFs) in the area; South Blind Slough would be the closer with Woodpecker Cove also being an alternative. These are both maintained by the USFS. It is the bidders responsibility to contact the USFS regarding use, fees and maintenance.

The University’s development projects are subject to all laws, orders, ordinances and regulations of federal, state or local authorities (including, but not limited to Federal Environmental Protection Administration (EPA) Alaska Department of Environmental Conservation regulations relating to National Pollutant Discharge Elimination System (NPDES) and storm water pollution prevention plans, the U.S. Army Corps of Engineers, Alaska District, Section 404 Wetland Regulations and Permitting, U.S. Fish & Wildlife Service Migratory Bird Management, Alaska Forest Resources and Practices Act (FRPA), Alaska Department of Environmental Conservation (DEC) Regulations, Coastal Management Plans and Alaska Worker’s Compensation Laws, and State of Alaska mining permitting and regulations).

Facilities and Land Management commonly holds an open house to address local concerns regarding the

² Regents’ Policy P05.11.020.C, (Definitions “disposal plan”).

**SOUTH MITKOF ISLAND TIMBER SALE
DEVELOPMENT AND DISPOSAL PLAN**

timber sale. Interested parties should thoroughly inspect the parcel prior to submitting an offer to ensure that the parcel is suitable for the party's intended use and to determine all permitting requirements related to that intended use.

The University is interested in receiving offers from qualified individuals or entities with: a proven record of contract compliance in large timber harvest sales, proven experience harvesting timber, a high level of operational efficiency, financial capability to properly complete the project in a timely manner, and a commitment to environmentally sound timber harvesting.

The University will consider offers to harvest timber from qualified individuals or entities, at fair market value, in accordance with the "2014 South Mitkof Island Competitive Timber Sale Development and Disposal Terms and Conditions." **The University reserves the right to terminate this Timber Sale and to reject any and all offers submitted, in its sole discretion, to negotiate the terms of any offer submitted, or to select the offer which the University determines to be in the best interest of the University.**

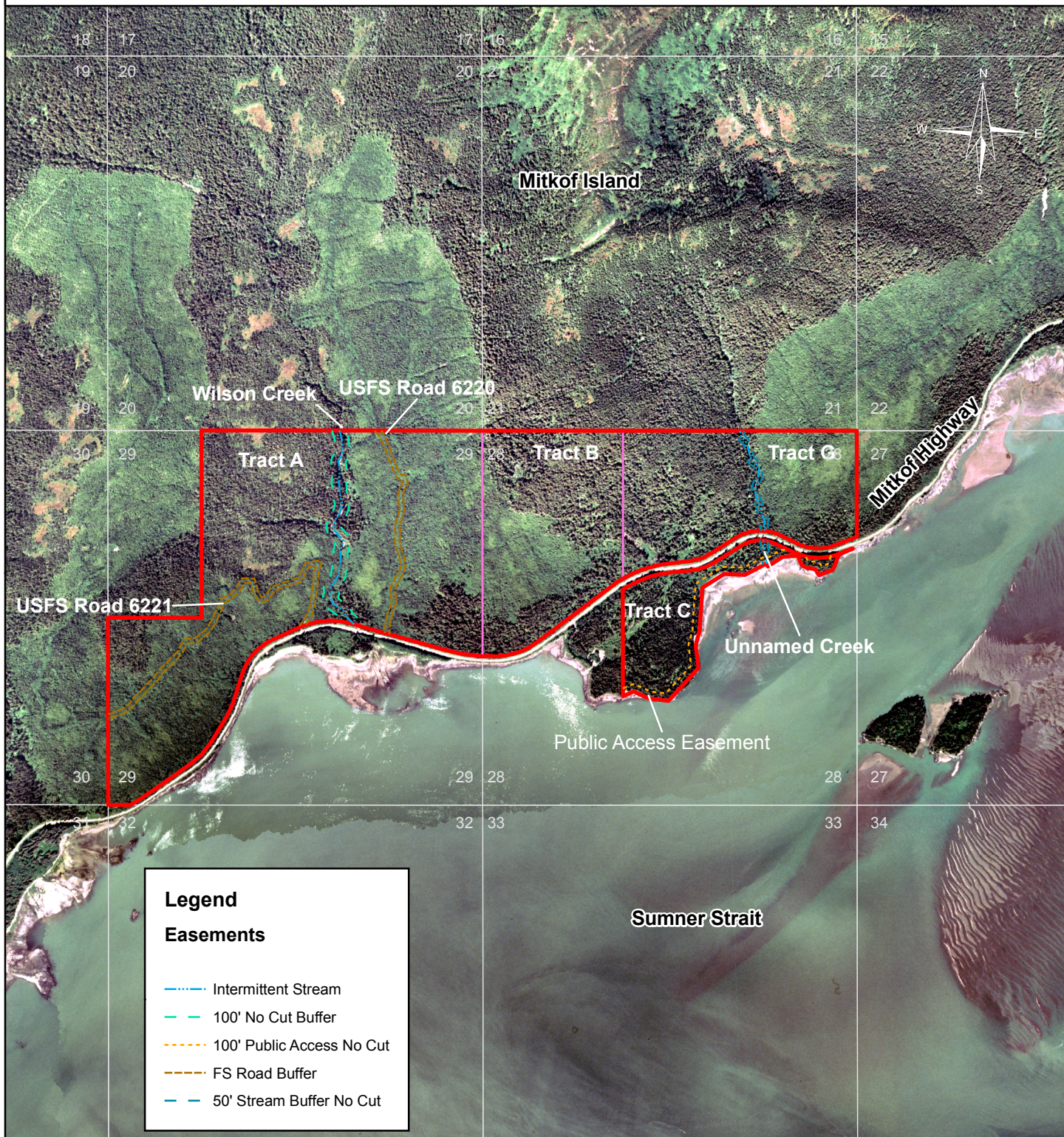
LEGAL DESCRIPTION AND PARCEL NUMBER

<u>PARCEL #</u>	<u>AREA</u>	<u>LEGAL</u>	<u>ACRES</u>
PE.SM.XXXX	Petersburg South Mitkof	<u>T61S, R82E:</u> SECTION 28: TRACTS B, C AND G	±658
		<u>T61S, R82E:</u> SECTION 29: TRACT A	

South Mitkof Island

Exhibit A

PE.SM.XXXX
657.854 Acres



**WRANGELL NARROWS EAST TIMBER SALE
DEVELOPMENT AND DISPOSAL PLAN**

**PETERSBURG, ALASKA
T61S, R80E, SEC. 5 & 8
COPPER RIVER MERIDIAN
PETERSBURG RECORDING DISTRICT**

The University of Alaska (the “University”) intends to offer to qualified individuals or entities the opportunity to harvest timber on the University’s Wrangell Narrows East parcel. The Wrangell Narrows East parcel is located on Mitkof Island, approximately 14 miles southwest of Petersburg along the Wrangell Narrows. The total area for the Wrangell Narrows East parcel is approximately 368 acres. The tree species present consists of western hemlock and Sitka spruce. All interested parties will have the opportunity to submit an offer to harvest timber on all or a portion of the Wrangell Narrows East parcel.¹

The University will consider offers to harvest timber from qualified individuals or entities, at fair market value, in accordance with the “*2014 Wrangell Narrows East Competitive Timber Sale Development and Disposal Terms and Conditions*.” Competitive offers must be received at the listed address, by no later than **5:00 P.M. on Wednesday, March 19, 2014**.

It is the sole responsibility of any interested party to ensure that they have received any amendments to this Wrangell Narrows East Competitive Timber Sale Development and Disposal Plan. The Wrangell Narrows East Competitive Timber Sale Development and Disposal Plan and any amendments thereto, are available on the Facilities and Land Management website at www.ualand.com. The University intends to award a contract near the end of April 2014.

Parties interested in commenting on the Wrangell Narrows East Competitive Timber Sale Development and Disposal Plan must submit written comments to the University of Alaska through its Facilities and Land Management department by fax at (907) 786-7733, by email at ua-land@alaska.edu or at the following address, by no later than **5:00 P.M. on Monday, March 17, 2014** to be considered.

**University of Alaska
Facilities and Land Management
1815 Bragaw Street, Suite 101
Anchorage, Alaska 99508-3438**

¹ Regents’ Policy P05.11.020.A, (Definitions “development plan”).

WRANGELL NARROWS EAST TIMBER SALE DEVELOPMENT AND DISPOSAL PLAN

The University of Alaska (the “University”) is offering to qualified individuals or entities the opportunity to harvest timber on the University’s Wrangell Narrows East parcel. The University’s Wrangell Narrows East parcel is located on Mitkof Island, approximately 14 miles southwest of the Petersburg along the Wrangell Narrows. The total area for the Wrangell Narrows East parcel is approximately 368 acres. The tree species present consists of western hemlock and Sitka spruce. All interested parties will have the opportunity to submit an offer to harvest timber on all or a portion of the Wrangell Narrows East parcel.²

Access to the Wrangell Narrows East parcel is by floatplane or boat.

This will be a select cut helicopter harvest sale. It will be up to the successful bidder to determine which trees they would like to harvest. Once a tree is cut all merchantable wood must be utilized. There are no roads so timber will have to be flown to a barge or the University may allow one small area to be cleared. This area may only be used for the landing of flown logs for sorting, scaling and barge loading.

The Alaska Department of Fish and Game (“ADFG”) does not currently identify any anadromous fish streams on the University’s Wrangell Narrows East parcel. The Successful Offeror is still responsible for confirming with ADFG the status of streams or waterbodies identified on-site during timber harvesting.

Export of logs from this sale will be allowed, however the successful bidder is encouraged to provide some logs to local markets.

The University’s development projects are subject to all laws, orders, ordinances and regulations of federal, state or local authorities (including, but not limited to Federal Environmental Protection Administration (EPA) Alaska Department of Environmental Conservation regulations relating to National Pollutant Discharge Elimination System (NPDES) and storm water pollution prevention plans, the U.S. Army Corps of Engineers, Alaska District, Section 404 Wetland Regulations and Permitting, U.S. Fish & Wildlife Service Migratory Bird Management, Alaska Forest Resources and Practices Act (FRPA), Alaska Department of Environmental Conservation (DEC) Regulations, Coastal Management Plans and Alaska Worker’s Compensation Laws, and State of Alaska mining permitting and regulations).

Facilities and Land Management commonly holds an open house to address local concerns regarding the timber sale. Interested parties should thoroughly inspect the parcel prior to submitting an offer to ensure that the parcel is suitable for the party’s intended use and to determine all permitting requirements related to that intended use.

² Regents’ Policy P05.11.020.C, (Definitions “disposal plan”).

**WRANGELL NARROWS EAST TIMBER SALE
DEVELOPMENT AND DISPOSAL PLAN**

The University is interested in receiving offers from qualified individuals or entities with: a proven record of contract compliance in large timber harvest sales, proven experience of harvesting timber, a high level of operational efficiency, financial capability to properly complete the project in a timely manner, and a commitment to environmentally sound timber harvest.

The University will consider offers to harvest timber from qualified individuals or entities, at fair market value, in accordance with the “2014 Wrangell Narrows East Competitive Timber Sale Development and Disposal Terms and Conditions.” **The University reserves the right to terminate this Timber Sale and to reject any and all offers submitted, in its sole discretion, to negotiate the terms of any offer submitted, or to select the offer which the University determines to be in the best interest of the University.**

LEGAL DESCRIPTION AND PARCEL NUMBER

<u>PARCEL #</u>	<u>AREA</u>	<u>LEGAL</u>	<u>ACRES</u>
PE.WN.XXXX	Petersburg Wrangell Narrows East	<u>T61S, R80E:</u> SECTION 5: LOTS 5 & 6, AND SE4SW4 <u>T61S, R80E:</u> SECTION 8: LOTS 1, 2, 3 & 4, AND E2W2	±368

Wrangell Narrows East

Exhibit A

PE.WN.XXXX
368.65 Acres



UNIVERSITY
of ALASKA
Many Traditions One Alaska

1,000

Feet

**UA FACILITIES and
LAND MANAGEMENT
December 2013**

Photo Source : UAF-GINA
Photo Date : May-Sept. 2006

Meridian Township Range
C 61S 80E

Petersburg C-3 (USGS)