



UNIVERSITY OF ALASKA
ANCHORAGE

SCHEMATIC DESIGN APPROVAL

Name of Project: UAA Mat-Su Paramedic Program/Classroom Addition

Location of Project: Mat-Su Campus, Palmer, AK

Project Number: 10-0015

Date of Request: August 30, 2011

Total Project Cost: \$ 3,625,000

Approval Required: Schematic Design Approval

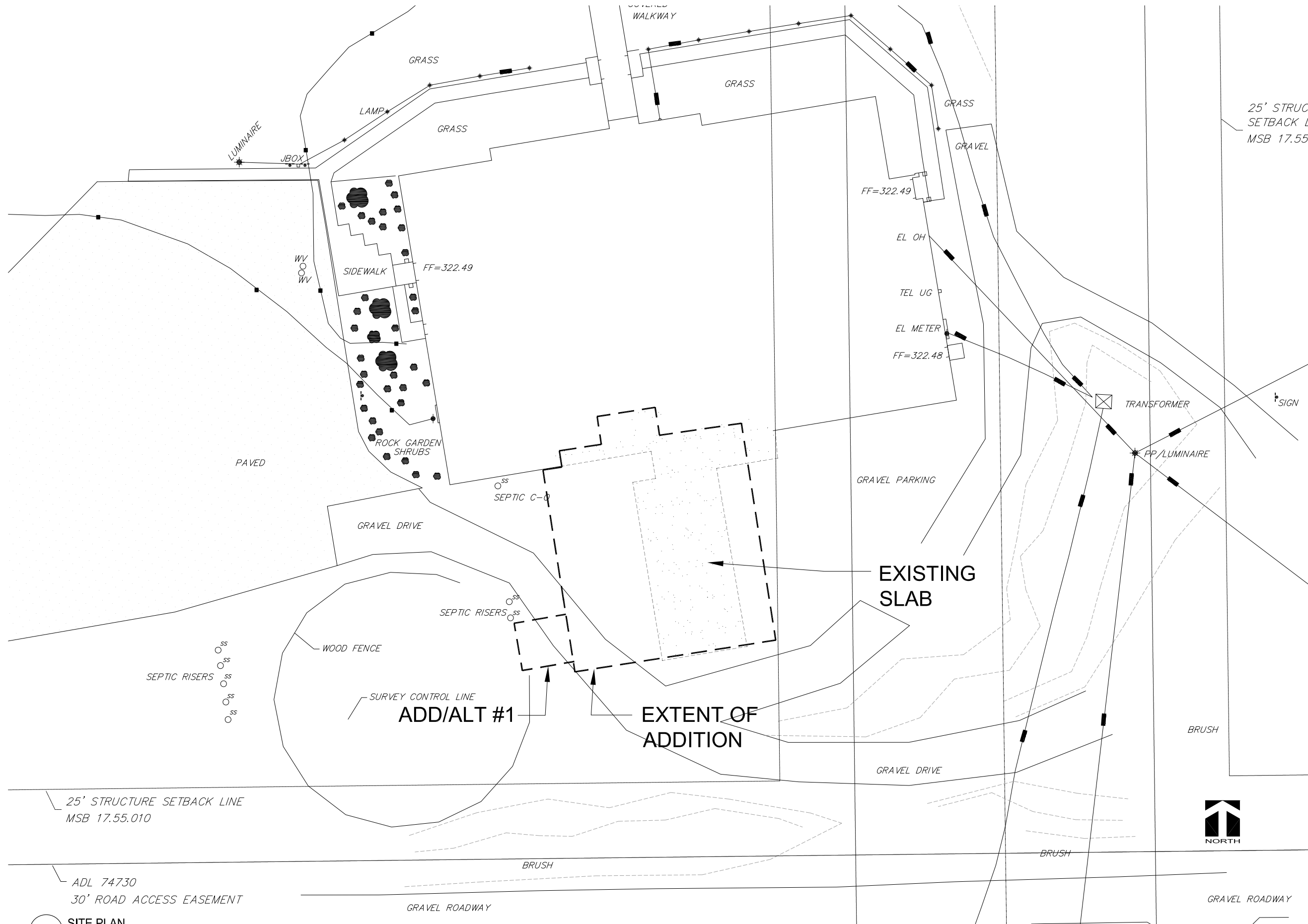
Prior Approvals/Actions: Preliminary Administrative Approval: November 2009
Project Agreement: November 18, 2010
Formal Project Approval: December 10, 2010

Reference Materials:

Project Budget

Project Drawings (Site Plan, Floor Plan and Exterior Elevation)

UNIVERSITY OF ALASKA			
Project Name:		Mat-Su Paramedic Program/Classroom Addition	
MAU:		UAA	
Building:	SnodGrass Hall	Date:	8/1/2011
Campus:	Mat-Su	Prepared by:	FP&C 512038
Project #:	10-0015	Acct #:	106708
Total GSF Affected by Project:		6400	6400
PROJECT BUDGET		FPA Budget	SDA Budget
A. Professional Services			
Advance Planning, Program Development			
Consultant: Design Services	10%	258,000	258,000
Consultant: Construction Phase Services		0	
Site Survey		6,800	6,800
Soils Testing & Engineering		20,000	20,000
Special Inspections		20,000	20,000
Plan Review Fees / Permits		9,000	9,000
Other			
Professional Services Subtotal		313,800	313,800
B. Construction			
General Construction			
Contract(s)		2,580,000	2,705,000
Other Contractors (List: _____)			
Construction Contingency	10%	258,000	258,000
Construction Subtotal		2,838,000	2,963,000
<i>Construction Cost per GSF</i>		<i>443</i>	<i>463</i>
C. Building Completion Activity			
Equipment	1%	25,800	25,800
Furnishings	2%	51,600	51,600
Art	1%	25,800	25,800
Building Completion Activity Subtotal		103,200	103,200
D. Owner Activities & Administrative Costs			
Project Plng, Staff Support	2%	70,000	70,000
Project Management	5%	175,000	175,000
Misc. Expenses: Advertising, Printing, Supplies, Etc.			
Owner Activities & Administrative Costs Subtotal		245,000	245,000
E. Total Project Cost		3,500,000	3,625,000
<i>Total Project Cost per GSF</i>		<i>547</i>	<i>566</i>
F. Total Appropriation(s)		\$ 3,500,000	\$ 3,625,000



UNIVERSITY OF ALASKA ANCHORAGE - MATSU COLLEGE
 PARAMEDIC / NURSING PROGRAM
 LAB & CLASSROOM ADDITION
 PALMER, ALASKA

LIVINGSTON STONE
 ARCHITECTURE
 ENGINEERING
 PLANNING
 INTERIOR DESIGN
 3800 ARCTIC BOULEVARD
 SUITE 301
 ANCHORAGE, ALASKA 99504-5790
 TEL 907 562 2058
 FAX 907 561 4526

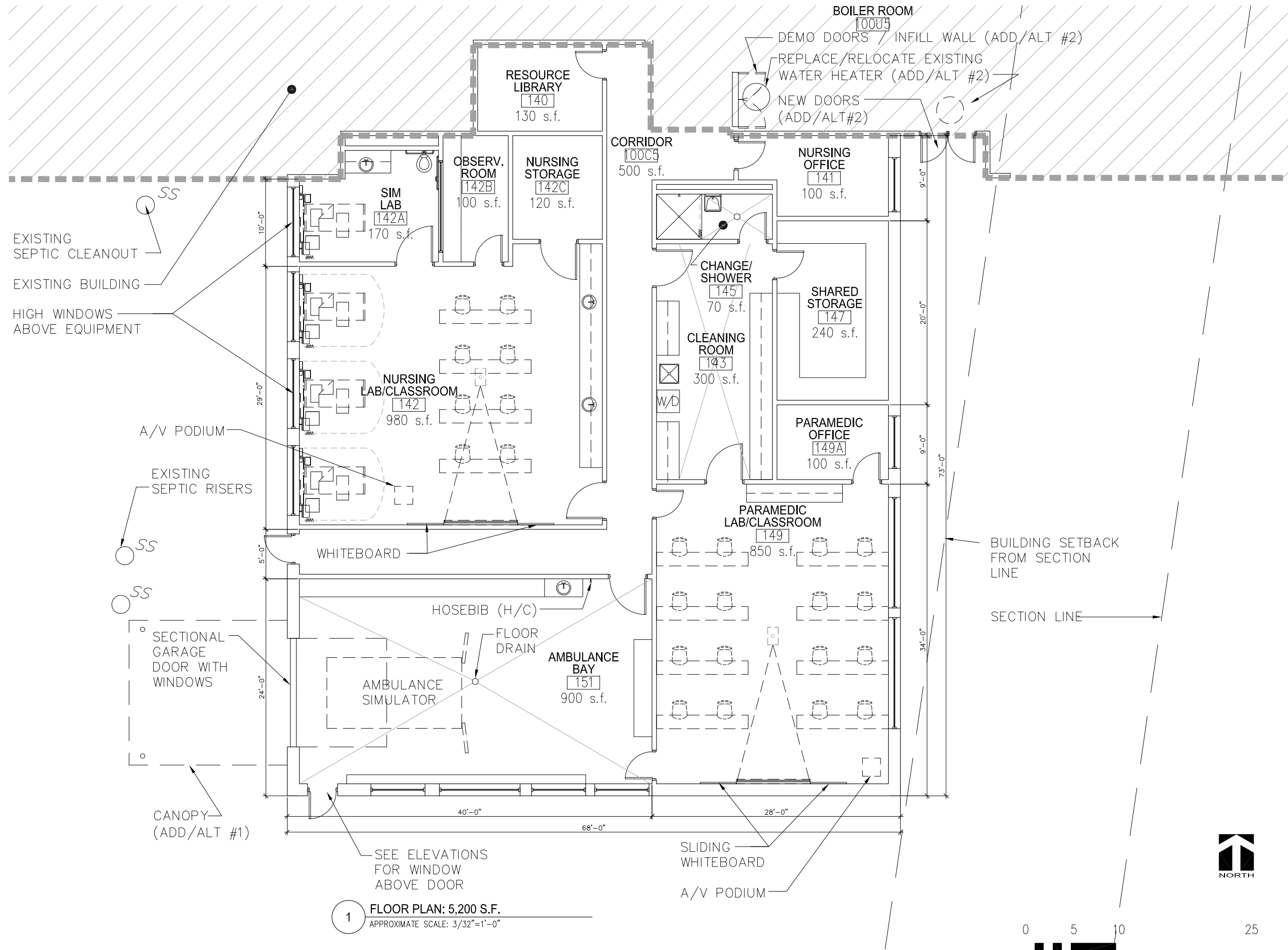
Copyright © 2011 by Livingston Stone, Inc.*
 all rights reserved. All parts of this drawing
 and the design it represents are instruments of
 service, and without the expressed, written
 permission of Livingston Stone, Inc., remain
 its exclusive property, and shall not be
 used, reproduced, or stored in any form.
 The "Livingston Stone, Inc." name and logo
 are trademarks of Livingston Stone, Inc.*

PROJECT NO. 1103.00
 DRAWN BY: RJ
 REVIEWED BY: BK
 DATE: August 2, 2011

SCHEMATIC DESIGN
 TITLE
 PRELIMINARY
 SITE PLAN

SHEET NO.
A100

1 SITE PLAN
 APPROXIMATE SCALE: 1/32"=1'-0"



EXISTING SEPTIC CLEANOUT
 EXISTING BUILDING
 HIGH WINDOWS ABOVE EQUIPMENT

A/V PODIUM
 EXISTING SEPTIC RISERS

SECTIONAL GARAGE DOOR WITH WINDOWS

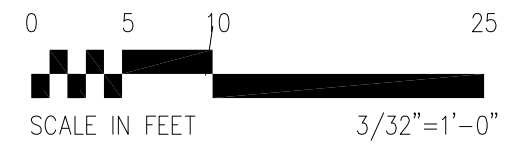
CANOPY (ADD/ALT #1)

1 FLOOR PLAN: 5,200 S.F.
 APPROXIMATE SCALE: 3/32"=1'-0"

SEE ELEVATIONS FOR WINDOW ABOVE DOOR

SLIDING WHITEBOARD
 A/V PODIUM

BUILDING SETBACK FROM SECTION LINE
 SECTION LINE



UNIVERSITY OF ALASKA ANCHORAGE - MATSU COLLEGE
PARAMEDIC / NURSING PROGRAM
LAB & CLASSROOM ADDITION
 PALMER, ALASKA

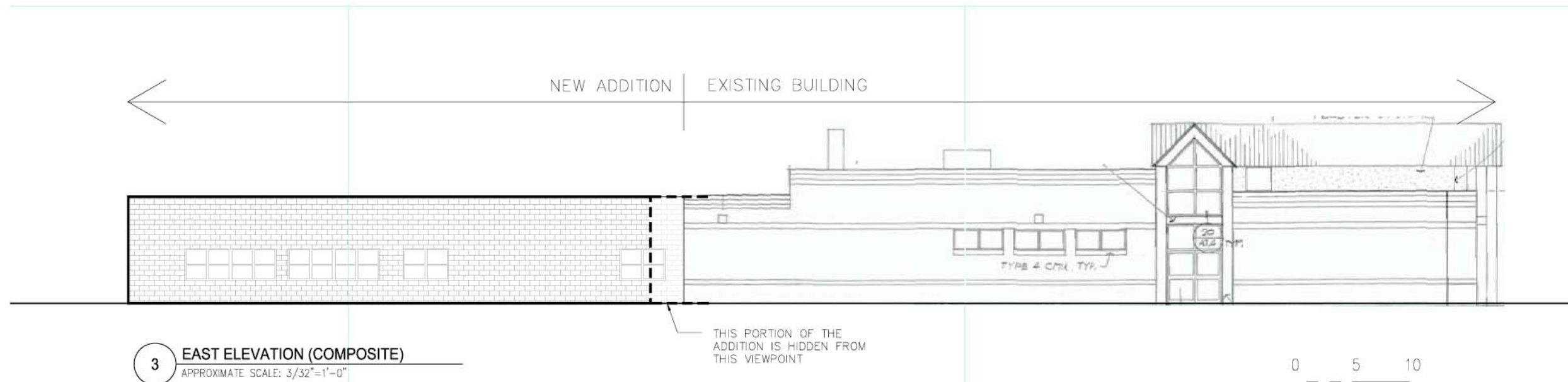
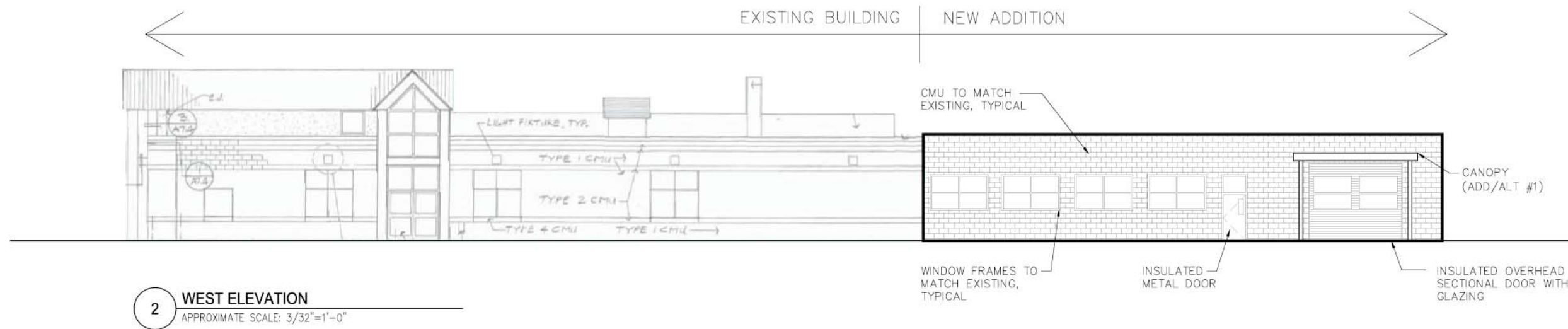
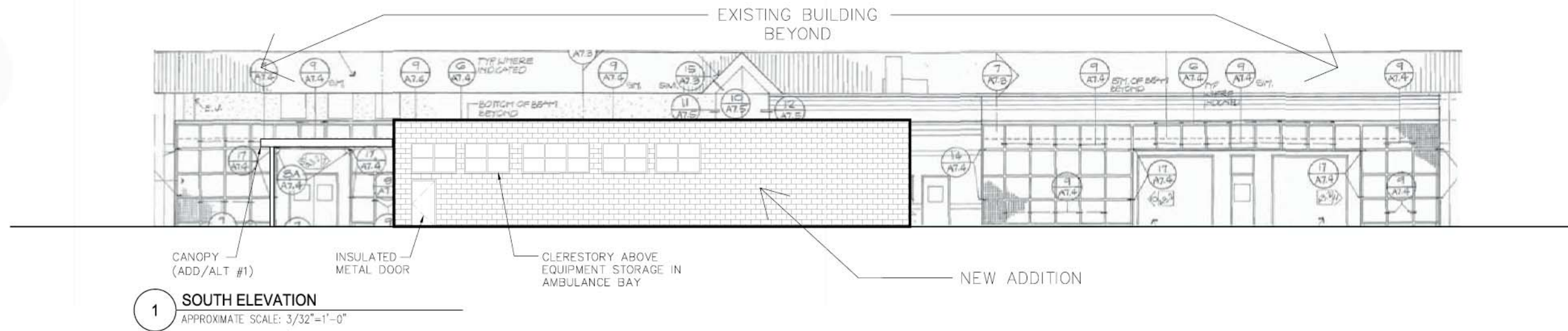
LIVINGSTON STONE
 ARCHITECTURE
 ENGINEERING
 PLANNING
 INTERIOR DESIGN
 3800 ARCTIC BOULEVARD
 SUITE 301
 ANCHORAGE, ALASKA 99505-5790
 TEL 907 562 2058
 FAX 907 561 6258

Copyright © 2011 by Livingston Stone, Inc. All rights reserved. All parts of this drawing and the design it represents are instruments of service, and without the expressed, written permission of Livingston Stone, Inc., remain its exclusive property, and shall not be used, reproduced, or stored in any form. The "Livingston Stone, Inc." name and logo are trademarks of Livingston Stone, Inc.

PROJECT NO. 1103.00
 DRAWN BY: RJ
 REVIEWED BY: BK
 DATE: August 2, 2011

SCHEMATIC DESIGN
 TITLE
 FLOOR
 PLAN

SHEET NO.
A101



UNIVERSITY OF ALASKA ANCHORAGE - MATSU COLLEGE
**PARAMEDIC / NURSING PROGRAM
 LAB & CLASSROOM ADDITION**
 PALMER, ALASKA



Copyright © 2011 by Livingston Stone, Inc. All rights reserved. All parts of this drawing and the design it represents are instruments of service, and without the expressed, written permission of Livingston Stone, Inc., remain its exclusive property, and shall not be used, reproduced, or stored in any form. The "Livingston Stone, Inc." name and logo are trademarks of Livingston Stone, Inc.®

PROJECT NO. 1103.00
 DRAWN BY: RJ
 REVIEWED BY: BK
 DATE: August 2, 2011

**SCHEMATIC DESIGN
 TITLE
 ELEVATIONS**

SHEET NO.
A201